



OEM Grips  
2022

[clarks.bike](https://clarks.bike)





# OEM SUPPORT

We are dedicated to our customers and endeavour to support them in every way possible. So in response to an ever changing retail landscape we have built up and developed our customer support system.

## 100% RELIABLE SUPPLY CHAIN

Our service centre provides all our customers with a comprehensive 'back-up' service. We freely provide warranty work, and technical advice as well as a replacement parts catalogue for all our current and older hydraulic and mechanical disc brake systems. To further assist we have a range of 'how to' instructional videos on our website demonstrating how parts can be fitted and replaced when need arises.

## WORKING WITH INTERNATIONAL BRANDS

Our worldwide distribution centres guarantee effective and reliable delivery of product across Central and Western Europe as well as Eastern Europe, U.S.A, South America and India.

## AFTERMARKET SUPPORT

Our comprehensive distribution network means that we can deliver product where ever possible within 24 hours of order placement.

## SERVICE SUPPORT, PRODUCT & VIDEO

Visit: [www.clarks.bike/how-to-videos.html](http://www.clarks.bike/how-to-videos.html)  
for product support and 'how to' instructional videos.

## CONTACT

**Hotline:** +44 (0)1455 254800  
**Email:** [info@clarks.bike](mailto:info@clarks.bike)



## Grips | Lock-On

Clarks LOCK-ON grips are constructed with a polypropylene (PP) inner sleeve coated with thermo plastic rubber (TPS) to provide a hard wearing and positive feel. Aluminium locking rings then secure firmly to the handle bar preventing any rotational movement of the grip. Available in a range of grip colours and anodised aluminium ring finishes, complete with a matching end plugs, Clarks Lock-On grips will enhance any MTB or Hybrid bike.

**CLO-201**

- Black Lock-On grip with anodised end
- Dual grip pattern

**Options** - Locking ring and grip colour customisation available



Code  
CLO-201

**CLO-201CLOSED**

- Closed face Lock-On end cap
- Dual grip pattern

**Options** - Locking ring and grip colour customisation available



Code  
CLO-201CLOSED

**CLO-202**

- PP Inner sleeve coated with TRP rubber coating for hard wearing positive feel
- End plugs, 19mm or 21mm, 130mm length

**Options** - Locking ring and grip colour customisation available



Code  
CLO-202

**CLO-208**

- Comfortable main body, 130mm
- Unique raised grip surface offering shock absorption properties and ventilation



Code  
CLO-208

**CLO-308**

- Comfortable main body, 130mm
- Increased rubber depth on palm area

**Options** - Locking ring customisation available

Code

CLO-308

**CLO-226**

- Length 130mm
- Rubber base in black



Code  
CLO-226

**CLO-211**

- Comfortable main body with cushioning micro flange surface

**Options** - Locking ring and grip colour customisation available



Code  
CLO-211

**CLO-210**

- Comfortable main body, 130mm
- Raised central area for improved palm support

**Options** - Locking ring and grip colour customisation available



Code  
CLO-210

**CLO-224**

- Comfortable neoprene surface, 130mm
- Raised central area for improved palm support. Lightweight - Only 71g a pair

**Options** - Locking ring and grip colour customisation available

Code  
CLO-224

**CLO-217**

- Dimple surface for effective cushioning
- Raised central area for improved palm support

**Options** - Locking ring and grip colour customisation available

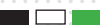


Code  
CLO-217

**CLO-219**

- Black styled raised rubber body for maximum shock absorption and overall grip

**Options** - Locking ring and grip colour customisation available



Code  
CLO-219

**CLO-215**

- Cork bar tape appearance

**Options** - Locking ring and grip colour customisation available



Code  
CLO-215



## Grips | Lock-On

**CLO-216**

- Lock-On grip 130mm Length
- 1 Locking ring per grip

**Options** - Locking ring and grip colour customisation available



Code

CLO-216

**CLO-276-CORK**

- Diamond pattern cork grip
- 22 x 130mm MTB grip

Code

CLO-276-CORK

**CLO-225-1**

- 130mm and 95mm



Code

CLO-225-1

**CLO-222**

- Neoprene surface ideal for wet weather riding, resilient to poor conditions
- 130mm Lightweight grip

**Options** - Locking ring and grip colour customisation available



Code

CLO-222

**CLO-223**

- Neoprene surface ideal for wet weather riding, raised central area for palm support
- Lightweight grip at 82g a pair

**Options** - Locking ring and grip colour customisation available

Code

CLO-223

**C217-CORK**

- Cork grip with raised central area for improved palm support
- 22 x 130mm MTB grip
- Double locking rings and end caps

Code

CLO-217-CORK

**CLO-276**

- Raised diamond pattern surface for increased grip and improved comfort
- 130mm Length

**Options** - Locking ring and grip colour customisation available



Code

CLO-276

**CLO-309**

- Comfortable main body, 130mm length
- Solid rubber surface

**Options** - Locking ring and grip colour customisation available



Code

CLO-309

**CLO-217A**

- Raised central area for improved palm support
- 22 x 130mm MTB grip, with end caps

**Options** - Locking ring and grip colour customisation available



Code

CLO-217A

**CLO-225**

- Neoprene surface ideal for wet weather riding, resilient to poor conditions
- Double locking rings

**Options** - Locking ring and grip colour customisation available



Code

CLO-225

**CLO-231**

- Silicone grips adapt to the riders palm shape, providing unrivalled support and control
- 100% Non-slip



Code

CLO-231

**CE-235-LEATHER**

- Ergonomic leather grip, single inner lock
- 22 x 135mm D1 Ergonomic grip



Code

CLO-235-LEATHER

## Grips | Lock-On

**CLO-220A**

- Real leather grip
- 22 x 130mm MTB grip with end caps



Code

CLO-220A

**CLO-220A-1**

- Leather grip
- 22 x 130mm + 95mm



Code

CLO-220A-1

**CLO-220A-2**

- Leather grip
- 22 x 95mm



Code

CLO-220A-2

**CLO-220C**

- Suede leather grip
- 22 x 130mm MTB grip



Code

CLO-220C

**CLO-220C-1**

- Suede leather grip
- 22 x 130mm + 95mm MTB grip



Code

CLO-220C-1

**CLO-220C-2**

- Suede leather grip
- 22 x 95mm MTB grip



Code

CLO-220C-2

**CLO-230**

- Foam grips with Lock-On rings
- 22 x 130mm MTB grip



Code

CLO-230

**CLO-501**

- Cloth material MTB grip
- 22 x 130mm MTB grip with end caps



Code

CLO-501

**CLO-215-CARB**

- Carbon bar tape style grip
- 130mm MTB grip



Code

CLO-215-CARB

**CLO-G241**

- One side Lock-On, closed end
- 22 x 130mm MTB grip

Code

CLO-G241

**CLO-275**

- Micro flange surface for improved shock absorption
- Small flange to ensure easy access to shifters, 130mm, 115mm and 145mm available

Options - Locking ring customisation available

Code

CLO-275

**CLO-240**

- Wave appearance anti-slide double Lock-On rings with end cap
- End cap: 16mm, 19mm, 21mm
- 22 x 130mm MTB Grip

Code

CLO-240

## Grips | Ergonomic

Our range of ergonomic grips feature profiles that support the riders hand with a larger contact area, thereby spreading out the vibration and shock carried through the grip making them more comfortable than a grip with a circular profile. Using various materials, styles and colours, these grips are primarily intended for use on Hybrid and City cycles.



### C44

- 125mm Length
- Ergonomic design for increased comfort
- Includes end plugs

Code

C44



### C44-COL

- 125mm Length
- Ergonomic design for increased comfort
- Includes end plugs



Code

C44-COL



### CE-301-92

- Comfortable main body
- Dimples to improve ventilation
- Moulded finger recesses on grip face
- 92mm



Code

CE-301-92



### CE-301-135

- Comfortable main body
- Dimples to improve ventilation
- Moulded finger recesses on grip face
- 135mm



Code

CE-301-135



### CE-302-92

- Ergonomic designed for comfort and precision control
- Bar end plugs included
- 92mm



Code

CE-302-92



### CE-302-135

- Ergonomic designed for comfort and precision control
- Bar end plugs included
- 135mm



Code

CE-302-135



### CE-205

- Comfortable main body with integrated bar ends, 140mm
- Integrated Lock-On rings for a smooth clean look and 100% non-slip

**Options** - Locking ring customisation available

Code

CE-205



### CE-306-135

- 1 Piece ergonomic grip, designed to offer great overall comfort and support for all day riding
- 135mm



Code

CE-306-135



### CE-306-92

- 1 Piece ergonomic grip, designed to offer great overall comfort and support for all day riding
- 92mm



Code

CE-306-92



### CE-206

- Ergonomically designed grip for comfort
- Detachable alloy bar ends
- 100% Non-slip alloy locking rings



Code

CE-206



### CE-203

- Ergonomically grip with alloy Lock-On rings
- Designed to offer great overall comfort and support for all day riding, with end plugs
- 130mm



Code

CE-203



### CE-312

- Ergonomically grip with alloy Lock-On rings
- Designed to offer great overall comfort and support for all day riding, with end plugs
- 130mm



Code

CE-312



## Grips | Ergonomic

**CE-232**

- 1 Piece ergonomic grip, designed to offer great overall comfort and support for all day riding, includes end caps
- 22 x 140mm



Code

CE-232

**CE212-CORK**

- Lock-On grip with end plug
- 140mm



Code

CE212-CORK

**CE-221A**

- PU Double sided grip with Lock-On rings
- Includes end caps
- 22 x 137mm



Code

CE-221A

**CE-221A-1**

- PU Double sided grip with Lock-On rings
- Includes end caps
- 22 x 137mm + 100mm



Code

CE-221A-1

**CE-221A-2**

- PU Double sided grip with Lock-On rings
- Includes end caps
- 22 x 100mm



Code

CE-221A-2

**CE-233**

- Ergonomic rubber grip one side lock on
- 22 x 140mm



Code

CE-233

**CE-234-CORK**

- Ergonomic designed cork grip
- Concealed Lock-On ring
- 22 x 136.5mm

Code

CE-234-CORK

**CLOE-G502**

- Cloth material grip with double Lock-On rings
- 22 x 137mm



Code

CLOE-G502

**C122-CORK**

- High concentration cork compound offers high shock absorption properties or increased comfort
- End caps supplied where appropriate

Code

C122-CORK

**CE-303**

- Comfortable main body, 130mm
- Micro flanged area for improved shock absorption



Code

CE-303

**CE302-CORK**

- Cork ergonomic grip with end caps
- 22 x 135mm

Code

CE302-CORK

**CLOE-221**

- Soft suede grip with 'copper' coloured Lock-On rings - 137mm in length
- Very comfortable with good palm support provided by ergonomic design

Code

CLOE-221

## Grips | Ergonomic



### C82-CORK

- Ergonomic design for increased comfort
- Rubber/Cork compound offers increased comfort and longevity
- End caps supplied where appropriate



Code

C82-CORK



### CE-G234

- Two colour ergonomic grip with lock inside
- Rubber base in black
- D2 Ergonomic grip
- 22.5mm x 135mm

Code

CE-G234



### CE-G234-1

- Two colour ergonomic grip with lock inside
- Rubber base in black
- D2 Ergonomic grip
- 95mm + 95mm

Code

CE-G234-1



### CE-G234-2

- Two colour ergonomic grip with lock inside
- Rubber base in black
- D2 Ergonomic grip
- 135mm + 95mm

Code

CE-G234-2



### C310-PU

- Comfortable main body
- Stitched PU material
- Lengths 135mm, 135mm + 95mm and 95 + 95mm

Code

C310-PU



### C310-LEATHER

- Comfortable main body
- Leather city grip with black stitching
- Lengths 135mm, 135mm + 95mm and 95 + 95mm

Code

C310-LEATHER



### CE310-SUEDE-LEATHER

- Comfortable main body
- Leather city grip with black stitching
- Lengths 135mm



Code

CE310-SUEDE-LEATHER



### CE310-SUEDE-95

- Comfortable main body
- Leather city grip with black stitching
- Lengths 95mm + 95mm



Code

CE310-SUEDE-95



### CE-315

- Ergonomic design offers added comfort
- Singled sided Lock-On ring and open end cap
- Lengths 136.5mm



Code

CE-315



### CL-G242

- Ergonomic design offers added comfort
- Singled sided Lock-On ring and closed end
- Lengths 130mm



Code

CL-G242



## Grips | Grip Ends and Locking Rings

Aluminium closed face locking rings are available in various anodised colour finishes, we also supply lock on bar end extensions that compliment our range of locking rings that can be used with out standard end caps.



### Locking Rings

- Universal locking ring
- Strong lightweight alloy construction
- Alloy lock clamp 100% non-slip
- Anodised finish

#### Options

**Colour** - Black, Blue, Green, Gold, Red or Silver

#### Part Numbers

Colour	Code
Black	CLR-CF-BLACK
Gold	CLR-CF-GOLD
Blue	CLR-CF-BLUE
Red	CLR-CF-RED
Green	CLR-CF-GREEN
Silver	CLR-CF-SILVER



### Alloy Bar Ends

- Ergonomic design for increased comfort
- Alloy construction for reduced weight and durability
- Anodised finish
- Lock clamp 100% non-slip

#### Options

**Colour** - Black, Blue, Red or Silver

#### Part Numbers

Colour	Code
Black	CB-02-BLACK
Blue	CB-02-BLUE
Red	CB-02-RED
Silver	CB-02-SILVER



### Rubber Bar Ends

- Rubber locking bar ends

#### Options

**Colour** - Black

#### Part Numbers

Colour	Code
Black	CL-GB03

## Grips | Lock-on Grips Customisation

A selection of our lock-on grips have the option of customising the grip body and locking ring to a colour of your choice from the options below.

### Grip body colour options



BLACK



BROWN



WHITE

### Locking ring colour options



GREEN



SILVER



RED



BLACK



GOLD



BLUE

## Grips | Standard

Our range of standard grips are designed for the recreational cyclist. Using rubber and neoprene for the contact surface these grips will provide long lasting use through all weather conditions. All grips include bar end plugs.



### C106

- 130mm Length
- Grip surface improves comfort and ventilation



Code

C106



### C49-1-92

- High quality 2 colour grip
- 92mm



Code

C49-1-92



### C49

- High quality 2 colour grip
- 130mm



Code

C49



### C76

- High quality 2 colour grip
- 130mm



Code

C76



### C-GR22

- Foam grip including plugs
- 130mm MTB grip



Code

C-GR22



### C-GR05

- Foam grip including plugs
- 20 x 130mm MTB grip



Code

C-GR05



### C-98-130

- 130mm Length
- Includes plugs



Code

C-98-130



### C-98-130C

- Rubber base in black
- 130mm MTB grip



Code

C-98-130C



### C-98-92

- C92mm Length
- Includes plugs



Code

C-98-92



### C98-92-C

- 92mm Length
- Includes plugs



Code

C98-92-C



### C305

- Rubber grip, Black/Grey dual pattern profile with end plugs
- 130mm MTB grip



Code

C305



### C305-2

- Rubber grip with end plugs
- 130mm + 95mm MTB grip



Code

C305-2



## Grips | Standard

**C125**

- Twin layer rubber grip provides comfort
- Closed end helps to protect end of bars
- 22 x 128mm city grip



Code

C125

**C-08(PVC)**

- PVC grip
- 22 x 105mm MTB grip



Code

C-08(PVC)

**C-08(TRP)**

- TRP Grip
- 22 x 105mm MTB grip



Code

C-08(TRP)

**C-41(PVC)**

- PVC Grip
- 22 x 85mm Kids grip



Code

C-41(PVC)

**C-41(TRP)**

- TRP Grip
- 22 x 85mm Kids grip



Code

C-41(TRP)

**C-42(PVC)**

- PVC Grip
- 22 x 130mm MTB grip



Code

C-42(PVC)

**C-42(TRP)**

- TRP Grip
- 22 x 130mm MTB grip



Code

C-42(TRP)

**C-10(PVC)**

- PVC Grip
- 110mm City grip



Code

C-10(PVC)

**C-10(TRP)**

- TRP Grip
- 110mm City grip



Code

C-10(TRP)

**C-110-85**

- Inner EVA, outer PU grip with end cap
- 85mm



Code

C-110-85

**C-110-100**

- Inner EVA, outer PU grip with end cap
- 100mm



Code

C-110-110

**C-110**

- Inner EVA, outer PU grip with end cap
- 110mm



Code

C-110

## Grips | Standard

**C-110-130**

- Inner EVA, outer PU grip with end cap
- 130mm



Code

C-110-130

**C-110-178**

- Inner EVA, outer PU grip with end cap
- 178mm



Code

C-110-178

**C-121**

- Rubber grip with closed end
- 22 x 123mm city grip



Code

C-121

**C-73**

- Two colour grip with closed end
- 120mm MTB grip



Code

C-73

**C-73B**

- Rubber grip
- 90 mm + 90mm



Code

C-73B

**C-73C**

- Rubber grip
- 120mm + 90mm



Code

C-73C

**C-61**

- Two colour grip with closed end
- 22 x 120mm MTB grip



Code

C-61

**C-SGR001**

- NBR foam grips, with end plugs
- 22 x 130mm MTB grip



Code

C-SGR001

**C-GR02**

- Super light, NBR foam grips, with end plug
- 22 x 127mm MTB grip



Code

C-GR02

**C-GR01**

- Foam grips with end plug
- 22 x 125mm MTB grip



Code

C-GR01

**C-GR17**

- Foam grips with end plug
- MTB grip
- 22 x 220mm x 2pcs and 20 x 125mm x 2pcs



Code

C-GR17

**C-129**

- Two colour grip with closed end
- 22 x 130mm MTB grip



Code

C-129



## Grips | Standard

**C-127**

- Two colour grip with closed end
- 22 x 130mm MTB grip



Code

C-127

**CS-004**

- Silicone grips mould to the shape of the riders palm, providing unrivalled support, comfort and control
- 130mm Length



Code

CS-004

**C-GR14**

- Sport foam grips
- 4 Grips including end plugs

Code

C-GR14

**C-122**

- Single piece grip with closed end
- 22 x 130mm city grip

Code

C-122

**C-120**

- Rubber grip with closed end
- 22 x 123mm



Code

C-120

**C-135-CAP**

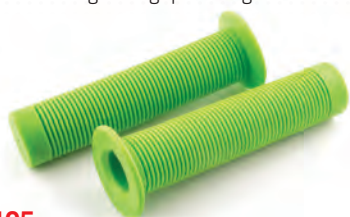
- 7 Sided non-tapered one colour open end
- D1 Grip
- 130mm

Code

C-135-CAP

## Grips | BMX

Our range of BMX grips feature profiles that support the riders hand with a larger contact area, thereby spreading out the vibration and shock carried through the grip making them more comfortable than a grip with a circular profile.



### C105

- 135mm Length
- Micro flange design for improved grip and impact absorption
- End caps supplied

Code  
C105



### C100-COL

- 145mm Length
- Open ended grip supplied with black expanding end caps
- Large flanged design

Code  
C100-COL



### C100

- Diamond grip pattern
- Open ended
- Large flanged design
- 145mm Length

Code  
C100



### C83A-OE

- 130mm In length
- Open ended grip supplied with black end caps
- Diamond grip pattern for good grip

Code  
C83A-OE



### C83A-OE-COL

- 130mm In length
- Diamond grip pattern for good grip
- Closed end design

Code  
C83A-OE-COL



### C83

- Flanged grip ensures total control
- 130mm Length

Code  
C83



### CL-BMX-209

- PP Inner sleeve coated with TRP rubber to give hard wearing positive feel
- Flanged design high quality anodised alloy locking rings
- 130mm Length

Code  
CL-BMX-209



### C-101

- Closed end design
- 22 x 127mm Length

Code  
C-101



### C-102

- Closed end grip
- 22 x 127mm Length

Code  
C-102



### C-105A

- Open ended grip with end plugs
- 22 x 135mm

Code  
C-105A



### C-105D

- Closed end design grip
- 22 x 100mm

Code  
C-105D



### C105M

- 135mm Length
- Open ended design grip supplied with black expanding end plugs
- Large flanged multi-coloured design

Code  
C105M



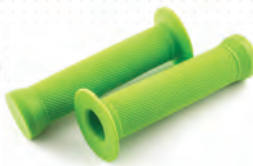
## Grips | BMX Colour Range



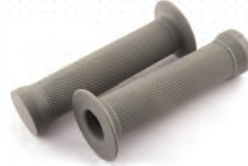
RED



BLACK



GREEN



GREY



PINK



LIGHT GREEN



BLUE



ORANGE



YELLOW



WHITE

## Grips | Kids

**C-47**

- 75mm in Length

Code

C-47

**C-47-COL**

- 75mm in Length



Code

C-47-COL

**CLO-218**

- PP Inner with TRP rubber
- Lock-On grip with end cap
- 22 x 92mm



Code

CLO-218

**C-111**

- Inner rubber, outer OU, closed end
- 22 x 102mm

Code

C-111

**C-111F**

- Inner rubber, outer OU, closed end
- 22 x 102mm

Code

C-111F

**C-71**

- Rubber grip
- 22 x 96mm



Code

C-71

**C-71-1**

- Rubber grip
- 22 x 110mm



Code

C-71-1

**C-112**

- Single colour mushroom shaped grip
- 22 x 100mm



Code

C-112

**C-96**

- Single colour rubber grip
- 22 x 100mm



Code

C-96

---

#### **UK Head Office & Distribution Centre**

Sales, administration and finance. Design/  
marketing and development department. Service  
centre and customer support. Warehouse.

##### **Clarks Cycle Systems Ltd.**

6 Lakeside Court  
Maple Drive  
Hinckley LE10 3BH  
Tel: +44 (0)1455 254800  
info@clarks.bike

#### **Clarks China Office**

Control of orders, suppliers and manufacturers.  
Order processing.

##### **Clarks Cycle Systems Co. Ltd Ningbo Office**

1103 Changqingting BLD,  
NO.262, Lane 416 ZHAOHUI RD,  
Yinzhou dist, Ningbo,  
Zhejiang, China.  
Tel: +86 (0)57487801640  
info@clarkscyclesystems.com

#### **Clarks Taiwan Office**

Sales, OEM business control and management.

##### **Clarks Cycle Systems Ltd., Taiwan Office**

info@clarkscyclesystems.com